

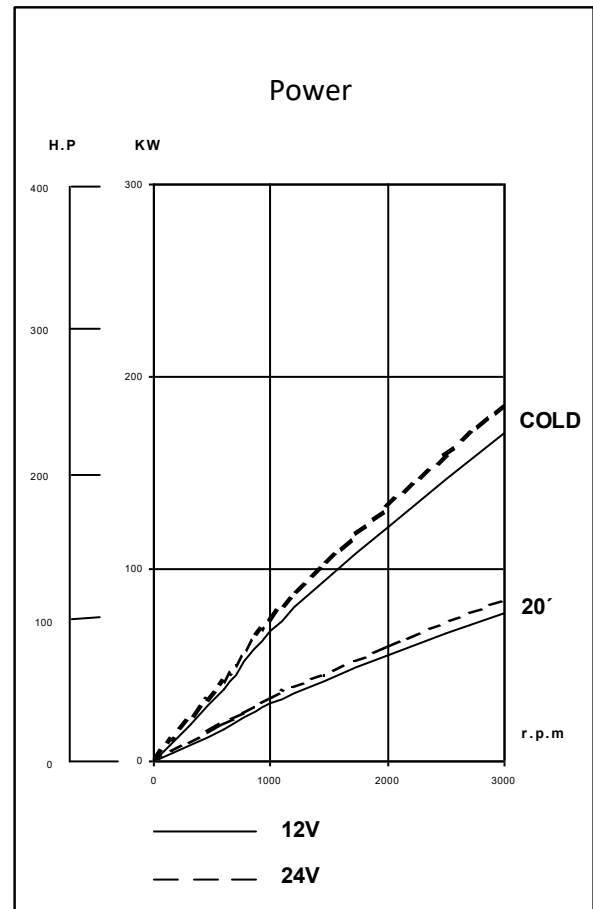
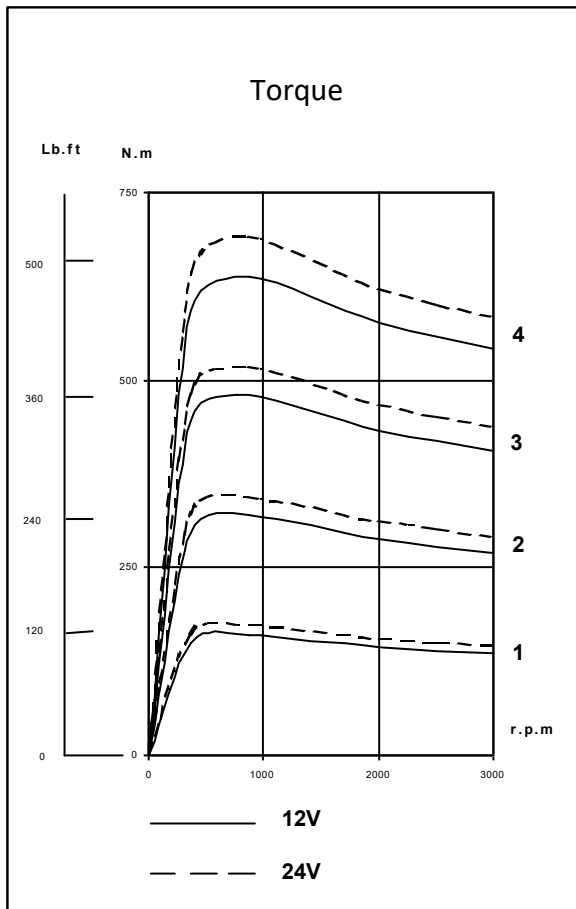
DRIVELINE RETARDER

CFK-65

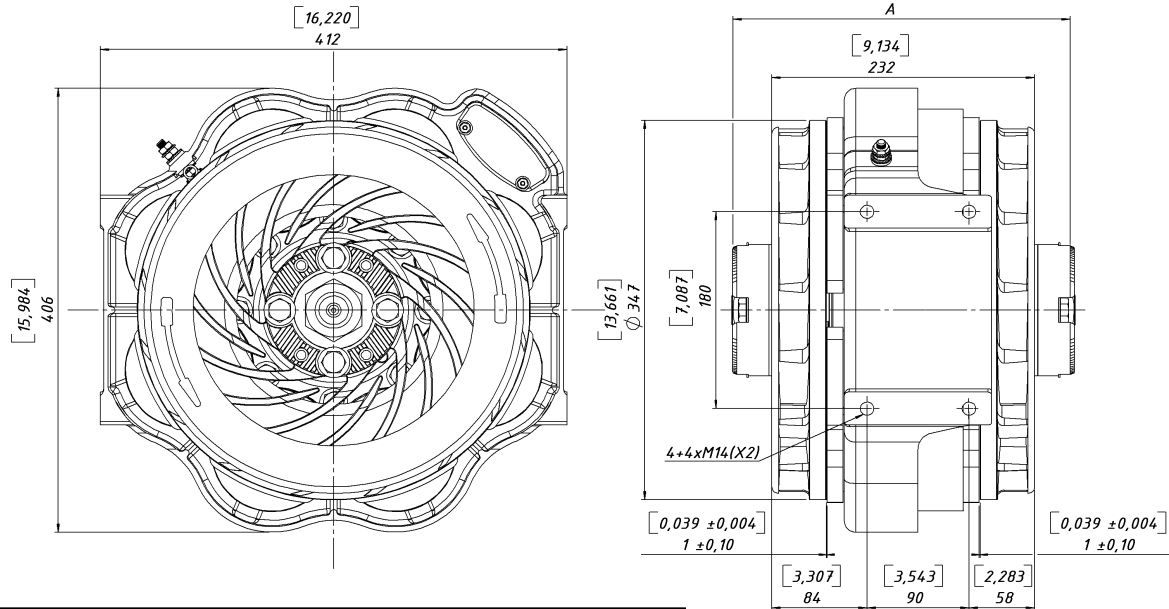
- SPECIFICATIONS

Application Range (GVW)		4 - 6,8 t / 8800 – 15000 lb
Maximum braking torque	12V	638 Nm / 471 lb-ft
	24V	690 Nm / 509 lb-ft
WEIGHT (no brackets)	Complete	130 Kg / 287 lb
	Stator	94 / 207 lb
	Rotors	36 Kg / 80 lb
Rotors Inertia		0.55 Kg^{m2}/ 13 lb-ft²
Maximum transmissible torque		10000 Nm / 7380 lb-ft
Max. admissible R.P.M. (min ⁻¹)	Constant	4000
	Periodic	5300
Air-gap regulation (±0.1 mm / ±0.0039 inch.)		1 mm / 0.0394 inch

- PERFORMANCE CURVES



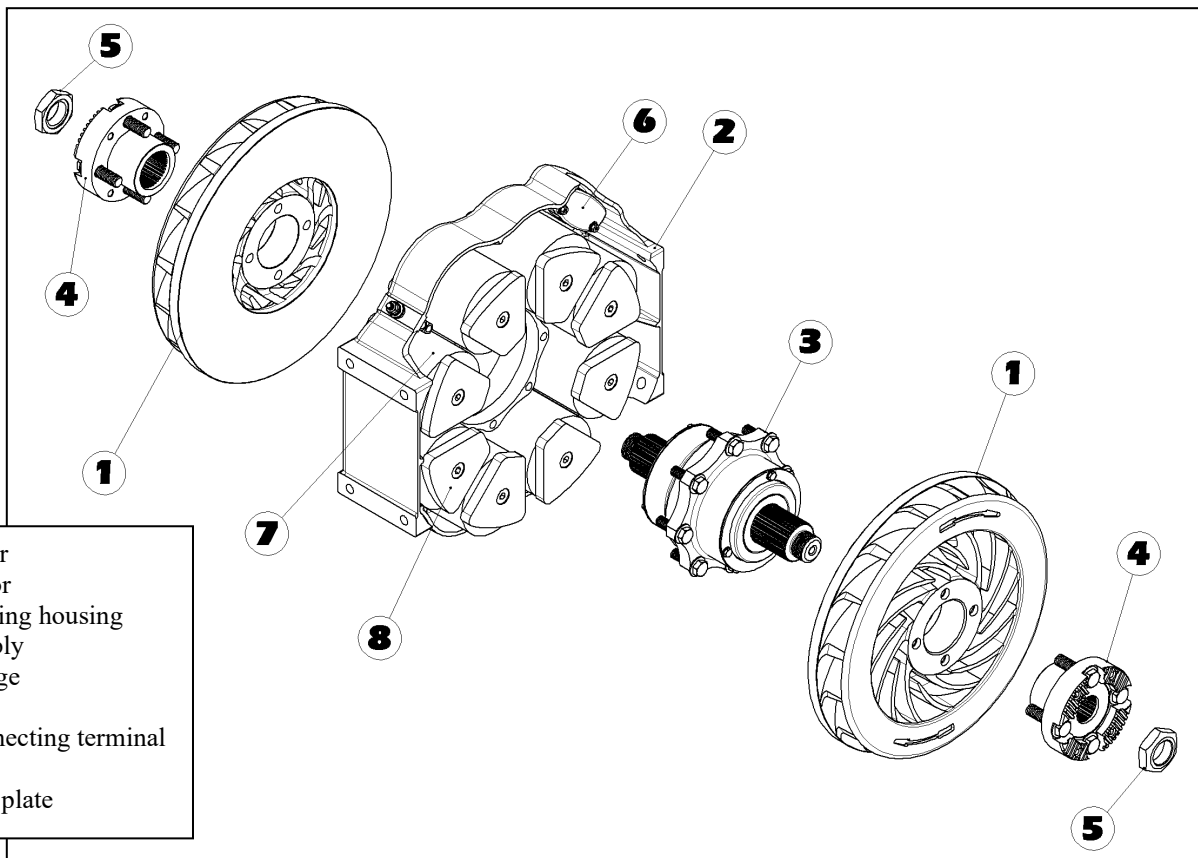
• **DIMENSIONS**



A	SAE 1400	SAE 1500	SAE 1600	SAE 1700	SAE 1800	DIN 120	DIN 150	KV 120-70 ^o	KV 150-70 ^o
inches	11,693	11,772	11,772	12,48	12,48	11,496	11,693	11,654	11,693
mm	297	299	297	317	317	292	297	296	297

Dimensions in: [inches]
[millimeters]

• **MAIN COMPONENTS**

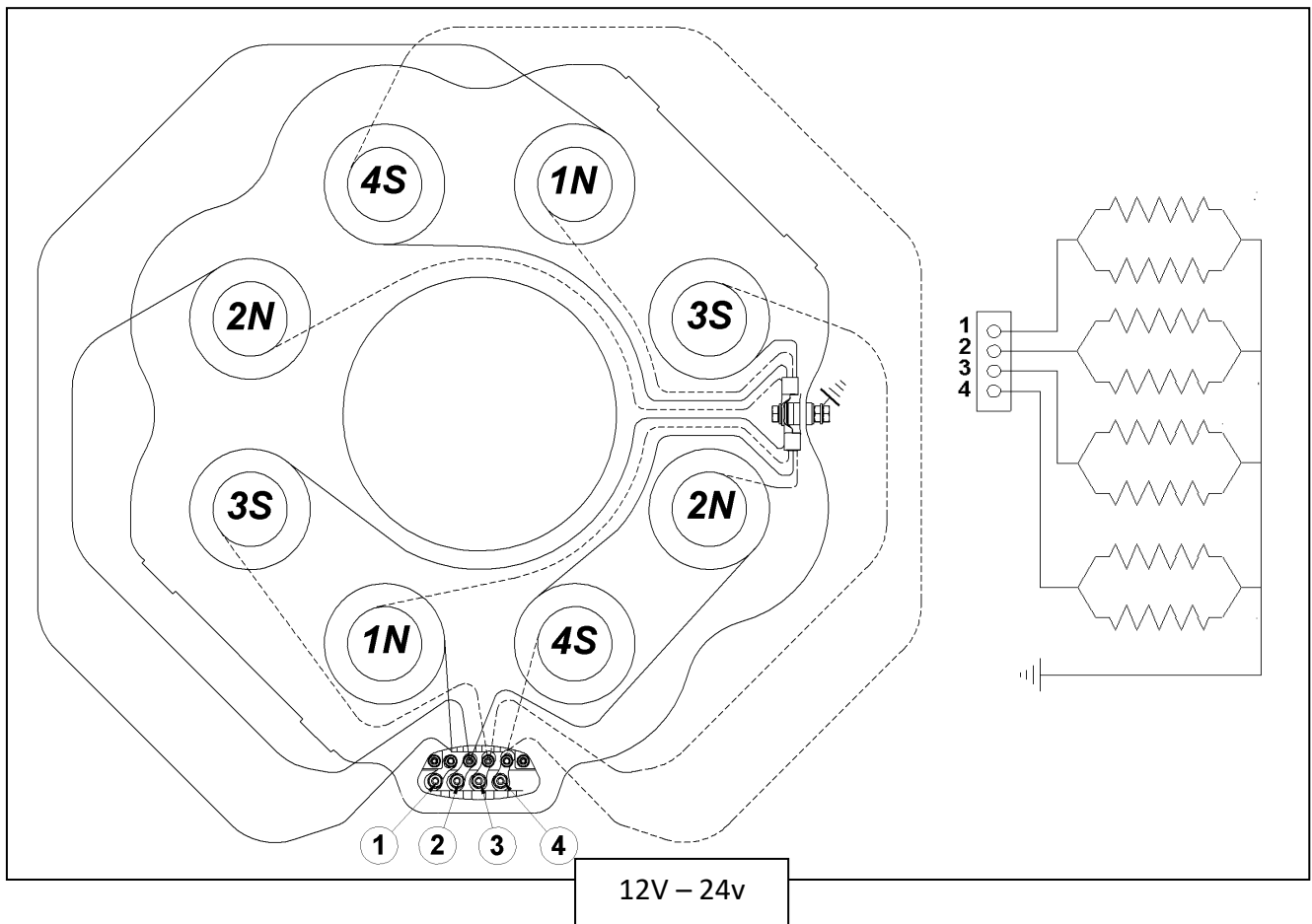


- 1-Rotor
- 2-Stator
- 3-Bearing housing assembly
- 4-Flange
- 5-Nut
- 6-Connecting terminal
- 7-Coil
- 8-Pole plate

- ELECTRICAL SPECIFICATIONS

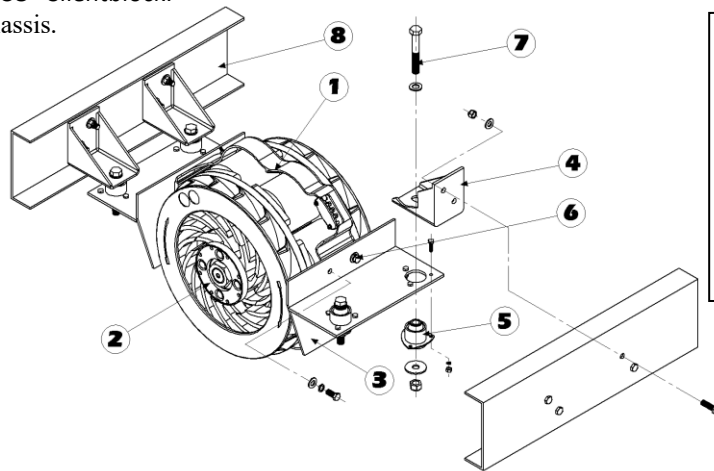
Voltage (depending on vehicle equipment)	12 V	24 V
Resistance per circuit (Ω) $\pm 5\%$ (20°C)	0.42	1.3
Resistance per coil (Ω) $\pm 5\%$ (20°C)	0.85	2.6
Consumption per circuit (A) $\pm 5\%$ (20°C)	28	18
Insulation resistance (M Ω)	1	

- INTERNAL WIRING DIAGRAM



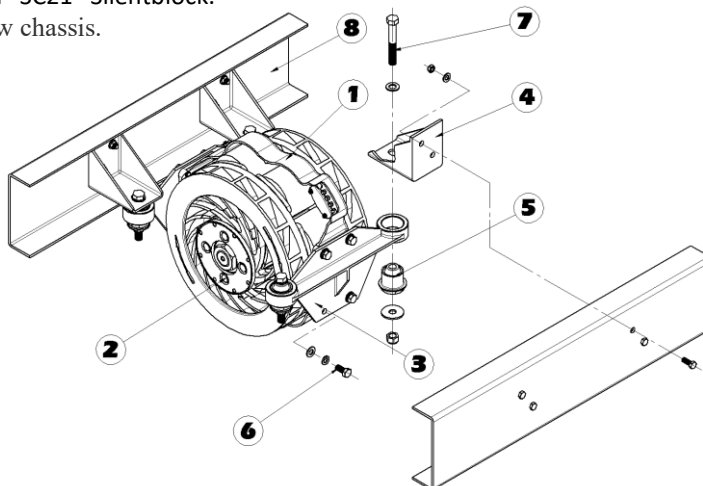
Wiring of 12 and 24 VDC version is equal, only the coil is different

Internal brackets with "CO" Silentblock.
Usually used in wide chassis.



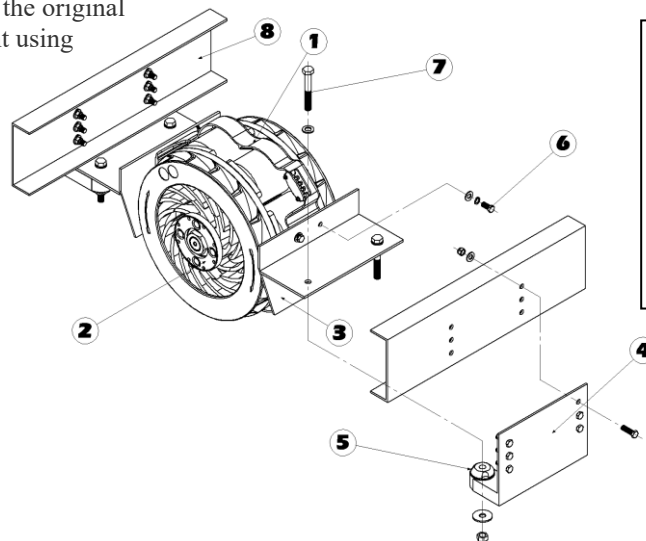
- 1-CFK-65.
- 2-Flange.
- 3-Retarder bracket (2 uni.)
- 4-Chassis bracket (4 uni.)
- 5-Silentblock "CO" (4 uni.)
- 6-Screw M14 120 Nm $\pm 5\%$
- 7-Screw M18(x1.5) 318 Nm $\pm 5\%$
- 8-Vehicle chassis.

Internal brackets with "SC21" Silentblock.
Usually used in narrow chassis.



- 1-CFK-65.
- 2-Flange.
- 3-Retarder bracket (2 uni.)
- 4-Chassis bracket (4 uni.)
- 5-Silentblock "SC21" (4 uni.)
- 6-Screw M14 120 Nm $\pm 5\%$
- 7-Screw M18(x1.5) 318 Nm $\pm 5\%$
- 8-Vehicle chassis.

External brackets with "SC21" Silentblock.
Usually used in chassis where the original
elements of the vehicle prevent using
the previous mentioned.



- 1-CFK-65.
- 2-Flange.
- 3-Retarder bracket (2 uni.)
- 4-External Chassis bracket (2 uni.)
- 5-Silentblock "SC21" (4 uni.)
- 6-Screw M14 120 Nm $\pm 5\%$
- 7-Screw M18(x1.5) 318 Nm $\pm 5\%$
- 8-Vehicle chassis.



KLAM™

Produced
by:

INDUSTRIAS ZELU, S.L.

Ctra. de Irún Km 6,5
31194 ARRE (Navarra) SPAIN

☎ +34 - 948 33 11 01 📠 **FAX** + 34- 948 33 11 51

e-mail: industrias@zelusl.com

Visit our Website: www.klamretarder.com

This space is reserved for our dealers